

The EES...

Entry-Exit System (EES) Border Check Process

Entry Exit System

...automatically registers

non-EU nationals each time they cross an EU external border



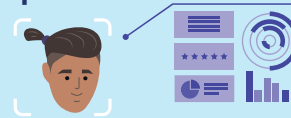
...applies to

- non-EU nationals travelling for a short stay of up to 90 days within a 180-day period
- ➔ visa-required travellers
- ➔ visa-exempt travellers
- *some exceptions apply*



...collects your

- names, date of birth, nationalities, sex
- travel document
- facial image and/or fingerprints



...records the

- date and place of entry into and exit from a European country using the EES
- refusals of entry, if this is the case



- Largely replaces passport stamping
- Gradually reduces wait times in passport control queues

- Informs travellers of the maximum duration of their authorised stays
- Simplifies border procedures

1

The traveller must present their travel documents to the border guard and...

2

... also provide their biometric data (facial image and fingerprints) which is registered in the EES

3

The border guard checks the traveller's information, asks questions, and digitally records the entry in the EES

4

The traveller benefits from a smoother and more efficient border crossing process



#TravelToEurope

Scan the QR code to learn more ▶

